

German Panzer unit insignia 1939-45

(part 2)

Author: Stefano Di Giusto

Available on www.panzer-ozak.it

This survey presents the unit insignia of Panzer- and Panzer-Grenadier-Divisionen and Panzer-Brigaden, and of their Panzertruppe sub-units (Panzer-Regimenter and Panzer-Abteilungen); it does not deal with divisional sub-units from other branches that may have used different specific insignia.

Additionally, insignia of independent Panzertruppe units (called Heerestruppe, i.e. units not inserted in a Division but at the disposal of higher headquarters) are also presented.

Insignia are taken from photographs (bar a few exceptions) to be shown as used on vehicles, hence the often-varying image quality.

The Eastern and the Western war theatres from 1941 to 1945 are dealt with together to avoid repetitions, as several units were moved from one front to the other especially in the last phase of the war.¹

Units formed very late in the war (1945) are only partially listed, since for many there is no information available on insignia they may have used.

Recently added sections are highlighted by the label **NEW**

Recently updated sections are highlighted by the label **UPDATE**

List of contents

1. Eastern and Western front 1941-45	p. 2
○ Panzer-Divisionen	p. 2
○ Panzer-Grenadier-Divisionen	p. 21
○ Panzer-Brigaden	p. 26
○ Heerestruppe	p. 29
2. North-Africa 1941-43	p. 35
3. Balkans late 1941-44	p. 37
4. Italy 1943-45	p. 38
○ Panzer-Divisionen	p. 38
○ Panzer-Grenadier-Divisionen	p. 39
○ Heerestruppe	p. 41
5. Waffen-SS NEW	p. 43

¹ Regarding the invasion of USSR in June 1941, a very detailed and useful study on the external appearance – including markings and stowage – of Pz.Kpfw. IV of all units participating in this operation is “Barbarossa stowage” and the Update nr.2 of “Panzer IV at the front” on the same subject, both by Craig Ellis (8wheels-good).

Eastern and Western front 1941-45

Panzer-Divisionen

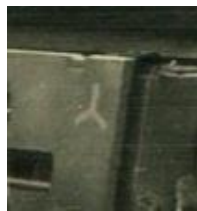
1. Panzer-Division

Divisional insignia:

Early 1941



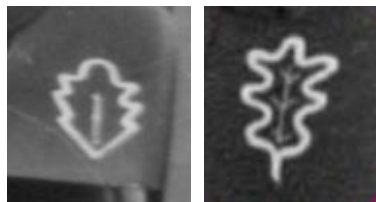
1941-42



Temporary insignia autumn 1941



1943-45



Panzer-Regiment 1: no specific insignia

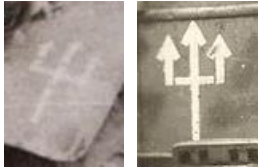
2. Panzer-Division

Divisional insignia:

1941-42



1943-45



Panzer-Regiment 3: in late 1941 – 1942 used as insignia a winged dragon in a shield, circle, rhombus, triangle or hexagon (probably to indicate company staff, first, second, third and fourth platoon, while the company was identified by a different colour; the background was also sometimes painted in light colour, which may have indicated the Abteilung)



In summer 1943 it used the Vienna coat of arms with a double-headed eagle



3. Panzer-Division

Divisional insignia:



1941-45 from September 1941 often used together with (or even replaced by) the Berliner



Bär (in black on yellow shield)



Temporary insignia ("Kursk marking") from summer 1943 to at least autumn 1943

Panzer-Regiment 6: no specific insignia

In 1941 a G (for Panzergruppe Guderian) was generally applied on tanks.



In 1941 2. Kp. used a Kuerassierkopf



some tanks in 8. Kp. an Ulanenkopf

In 1941 some tanks from III. Abt./Pz.Rgt. 6 still carried the shark insignia previously used by I. Abt./Pz.Rgt. 28, which was renamed III. Abt./Pz.Rgt. 6 in March 1941

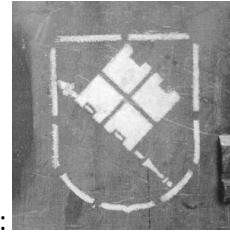


4. Panzer-Division

Divisional insignia: 1941-42



Also used in 1941:



1943



(until August)

1943-45



(addition of crossed swords after August 1943)

Panzer-Regiment 35: no specific insignia but unit name sometimes added to the divisional insignia



in 1944-45

I. Abt. (from January 1944 renumbered **II. Abt.**): from 1941 to the end of the war it used a Berliner Bär



(Berlin's bear)



in different colours (reportedly: Stab = green, 1. Kp. = white, 2. = red, 3. = yellow and 4. = blue (black?))



II. Abt.: it used (probably only in 1942) a board's head (Eberkopf)
became III. Abt./Pz.Rgt. 15)

(in May 1942 it

5. Panzer-Division

Divisional insignia:

1941-45



Temporary insignia early 1943:



Panzer-Regiment 31: devil's head

1941-42



1944-45



6. Panzer-Division

Divisional insignia: 1941-42



Temporary insignia during autumn 1941



Temporary insignia during spring / summer 1943:



Temporary insignia ("Kursk marking") from summer 1943 to winter 1943-44



Both insignia were also used together during summer 1943



1944-45



Panzer-Regiment 11: no specific insignia

In summer 43 the letters "Op" were painted on tanks, for the name of the regiment commander, Oberst



Hermann von Oppeln-Bronikowski

Panzer-Abteilung 65 (disbanded in early 1942): no specific insignia

7. Panzer-Division



Divisional insignia: 1941-45



Temporary insignia during winter 1942-43

Temporary insignia ("Kursk marking") from summer 1943 to at least autumn 1943

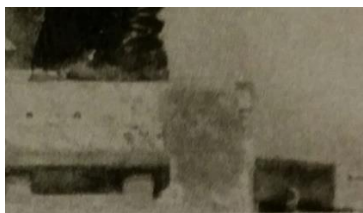


Panzer-Regiment 25: no specific insignia

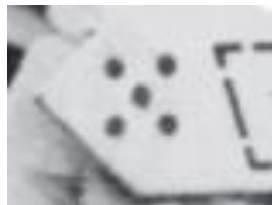
8. Panzer-Division



Divisional insignia: 1941 – February 43



Temporary insignia during March – April 1943



April 1943-45

Panzer-Regiment 10: no specific insignia

9. Panzer-Division

Divisional insignia:

1941-43



1943-45



Panzer-Regiment 33:

Insignia used in summer 1942



(cross on dark square - unconfirmed)

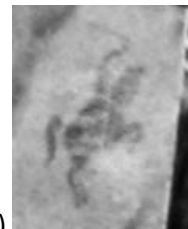
Insignia seen on some tanks in summer 1942



From spring 1943 to the end of the war



(mid-1943)



(late 1944)

10. Panzer-Division

Divisional insignia: 1941-42



Panzer-Regiment 7:

In 1941 a G (for Panzergruppe Guderian) was generally applied on tanks.

11. Panzer-Division

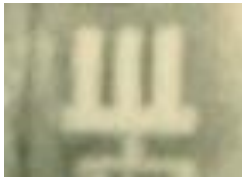
Divisional insignia:

1941-45



often used together with the "Gespenster" (ghost)

Temporary insignia ("Kursk marking") from summer 1943 to winter 1943-44



Panzer-Regiment 15: no specific insignia

In 1941 a K (for Panzergruppe von Kleist) was sometimes carried on the turret rear box.

In 1941, like in previous campaigns, a rhomboid (its colour probably indicating the company) was painted under or near the turret numbers and on turret rear (with black bar probably indicating II. Abteilung); numbers were always 1 or 2-figure



In 1941 a horse was painted on the front plate of a Rgt.Befehlspanzer III (nr. 01) while a bison was painted on a Rgt.Befehlspanzer I (nr. 04 + flag) and III (nr. 01 + flag)



In 1942, **III. Abt./Panzer-Regiment 15** (ex-II./Pz.Rgt. 35, from May 1942 III./Pz.Rgt. 15) used a board's head



(Eberkopf) as insignia

12. Panzer-Division



Divisional insignia: 1941-45



Temporary insignia from summer 1943 to early 1944

Panzer-Regiment 29: no specific insignia

13. Panzer-Division (from March 1945 **Panzer-Division "Feldherrnhalle" 2**)



Divisional insignia: 1941-45

Panzer-Regiment 4: no specific insignia



In 1941 the divisional insignia was often coupled with the rhomboid and company number and sometimes a K (for Panzergruppe von Kleist) was also applied

14. Panzer-Division



Divisional insignia: 1941-45

Panzer-Regiment 36: no specific insignia

In 1941 and again in 1942 vehicles also often carried a K (for Panzergruppe von Kleist) and a filled-in M (for III. Panzer Korps of Gen. von Mackensen) painted in various colours



16. Panzer-Division



Divisional insignia: 1941-45

Panzer-Regiment 2: no specific insignia

17. Panzer-Division



Divisional insignia: 1941-45

Panzer-Regiment 39: no specific insignia

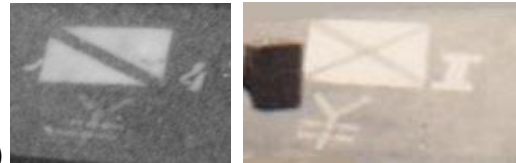
In 1941 a G (for Panzergruppe Guderian) was generally applied on tanks.

Also, in 1941 tanks from I. and II. Abt. sometimes carried on the rear (rarely on the front) a rhomboid with a



bar or crossed bars inside (probably respectively I. or II. Abteilung)

(during late 1940 and early 1941 the rhomboid was solid white and also carried on the tank front but this



appears to have changed before the invasion of the USSR)

Tanks in III. Abteilung – which had been formed as Panzer-Lehr-Abt. and only existed in 1941– carried a rhomboid with an L (for Lehr) and the company number on the front and rear (the number referred to the original Panzer-Lehr-Abt., i.e. 1. Kp. for 7./Pz.Rgt. 39, 2. Kp. for 8./Pz.Rgt. 39 and 4. Kp. for 9./Pz.Rgt. 39)



18. Panzer-Division

Divisional insignia: 1941-42



1943



Panzer-Regiment 18: in late 1940 – early 1941 II. Abt./Pz.Rgt. 18 (formerly Tauch-Pz.Abt. B) used briefly as an insignia an anglerfish



From spring 1941 the entire Panzer-Regiment 18 used as insignia a skull on waves

In 1941 a G (for Panzergruppe Guderian) was generally applied on tanks.



From May 1942 **Panzer-Abteilung 18:**

Panzer-Regiment 28: for a short time the division had a second regiment, Panzer-Regiment 28, which was disbanded in March 1941.

I. Abt./Pz.Rgt. 28 (formerly **Tauch-Pz.Abt. C**) continued to use as insignia the shark of Tauch-Pz.Abt. C



II. Abt./Pz.Rgt. 28 (formerly **Tauch-Pz.Abt. D**) continued to use as insignia the sword of Tauch-Pz.Abt. D; it disappeared after the Abteilung became **III. Abt./Pz.Rgt. 18** in March 1941



19. Panzer-Division



Divisional insignia: 1941-45



Temporary insignia from late 1943 to early 1944

Panzer-Regiment 27: no specific insignia

20. Panzer-Division

Divisional insignia:



1941-43

variant during late 1941 / early 1942



From May 1943-45



Insignia used on von Kessel's (Div.Kdr.) Befehlspanzer in early 1944

Panzer-Regiment 21: no specific insignia



Panzer-Abteilung 21 (1943-44):



Insignia used by 3. Kp. during summer 43

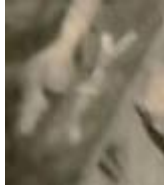
21. Panzer-Division (neu)

Divisional insignia: 1944-45



(F for Feuchtinger, the divisional commander)

later replaced by



(unconfirmed)

Panzer-Regiment 22: no specific insignia

22. Panzer-Division

Divisional insignia: 1941-43



Panzer-Regiment 204: no specific insignia

23. Panzer-Division

Divisional insignia: 1941-45



often used with the Eifel tour



Panzer-Regiment 201 / 23:

different sub-units, sometimes with white outline; the colours have been reported as being white for I. Abt., red for II. Abt., yellow for III. Abt. and green for the Rgt.Stab)



(in different colours for

24. Panzer-Division

Divisional insignia: 1942-45



generally used together with (or very often replaced by)



the leaping horseman

Panzer-Regiment 24: no specific insignia

25. Panzer-Division

Divisional insignia: 1942-43



NEW

1944-45



Panzer-Regiment 9: in 1945



(representing a claw with a 'Z', Zahn – tooth in German – being the name of the regiment commander)

26. Panzer-Division

Divisional insignia during the setting-up in France (for the insignia used in Italy during 1943-45, see the



specific section): in 1942 a Prussian grenadier's head on a square



replaced from January 1943 by a sword in a shield

(used only in France)

Panzer-Regiment 26: no specific insignia

27. Panzer-Division



Divisional insignia: 1942-43

(insignia assigned by orders, no photo evidence known)

Panzer-Abteilung 127: no specific insignia known

116. Panzer-Division



Divisional insignia: 1944-45

Panzer-Regiment 116: no specific insignia

Panzer-Lehr-Division



Divisional insignia: 1944-45

Panzer-Lehr-Regiment 130: no specific insignia



In summer 1944 tanks from I. Abt. often carried a shield insignia on the turret sides and rear (reference to the family of the commander, Wilhelm Prinz von Schönburg-Waldenburg)

Panzer-Division / Panzer-Brigade "Norwegen"

Divisional insignia (1943-45): no known insignia

Panzer-Abteilung "Norwegen": no specific insignia known

Fallschirm-Panzer-Division "Hermann Göring"

Divisional insignia:



1944-45
and company) (one of many examples – at the same time tactical symbol indicating unit



Fallschirm-Panzer-Regiment "HG": 1944-45

Panzer-Grenadier-Divisionen

3. Infanterie-Division (mot) / 3. Panzer-Grenadier-Division



Divisional insignia: 1941-43
front 1944-45)

(used in Italy 1943-44, use unconfirmed on the Western

Panzer-Abteilung 103: no specific insignia

10. Infanterie-Division (mot) / 10. Panzer-Grenadier-Division



Divisional insignia: 1941-42

1943-45



Panzer-Abteilung 7: no specific insignia

15. Panzer-Grenadier-Division



Divisional insignia: 1944-45

(1943-44: see section on Italy)

Panzer-Abteilung 115: no specific insignia confirmed on the Western front

16. Infanterie-Division (mot) / 16. Panzer-Grenadier-Division



Divisional insignia: 1941-45

Panzer-Abteilung 116: no specific insignia

18. Infanterie-Division (mot) / 18. Panzer-Grenadier-Division

Divisional insignia: 1941-45



Panzer-Abteilung 118:



20. Panzer-Grenadier-Division

Divisional insignia: 1943-45



Panzer-Abteilung 8: no specific insignia

25. Panzer-Grenadier-Division

Divisional insignia:

1943-45



(apparently the unit had two insignia, used together but also separately)

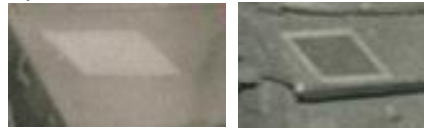
Panzer-Abteilung 5: no specific insignia

29. Infanterie-Division (mot)

Divisional insignia: 1941-43



Panzer-Abteilung 129: no specific insignia. Rhomboid painted on tanks' front and rear in different colours to



indicate the company, sometimes outlined in white

(for **29. Panzer-Grenadier-Division**: see section on Italy 1943-45)

60. Infanterie-Division (mot)



Divisional insignia: 1941-43



Panzer-Abteilung 160:

345. Infanterie-Division (mot) NEW



Divisional insignia: 1942-43

(division existed only briefly and became 29. Panzer-Grenadier-Division in March 1943)

386. Infanterie-Division (mot) NEW



Divisional insignia: 1942-43

(division existed only briefly and became 3. Panzer-Grenadier-Division in March 1943)

Panzer-Grenadier-Division "Feldherrnhalle" (from November 1944 **Panzer-Division "Feldherrnhalle"**, from March 1945 **Panzer-Division "Feldherrnhalle" 1**)



Divisional insignia: 1943-45 (the Wolfsangel was painted in the respective Waffenfarbe or branch-of-service colour)

Panzer-Abteilung "FHH" (from March 1945 **Panzer-Regiment "FHH"**): no specific insignia – it used the divisional insignia with the Wolfsangel in pink, the Panzertruppe Waffenfarbe

Infanterie-Division (mot) / Panzer-Grenadier-Division "Grossdeutschland"



Divisional insignia: 1942-45

Panzer-Abteilung "GD", from January 1943 **Panzer-Regiment "GD"**: no specific insignia

Panzer-Grenadier-Division "Kurmark"

Divisional insignia: reportedly it used a Brandenburg eagle as insignia (1945); no known use on vehicles

Panzer-Abteilung 51: no specific insignia known

Panzer-Grenadier-Division "Brandenburg"



Divisional insignia: 1945

Panzer-Regiment "Brandenburg": no specific insignia known

Führer-Grenadier-Division

Divisional insignia: reportedly it used a GD helmet in blue as insignia (1945); no known use on vehicles

Panzer-Regiment 101: no specific insignia known

Führer-Begleit-Division

Divisional insignia: reportedly it used a GD helmet in yellow as insignia (1945); no known use on vehicles



Insignia used by the Führer-Begleit-Brigade in late 1944: (it may have also been used by the division)

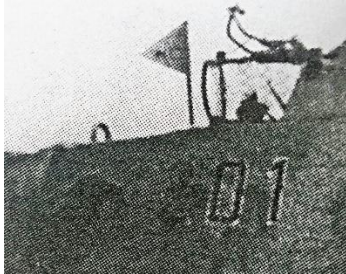
Panzer-Regiment 102: no specific insignia known

Panzer-Brigaden

Panzer-Brigade 101

No known insignia

Panzer-Abteilung 2101: a bison (?) insignia was painted on the Panther turrets



Panzer-Brigade 102

No known insignia

Panzer-Abteilung 2102: no specific insignia known

Panzer-Brigade 103

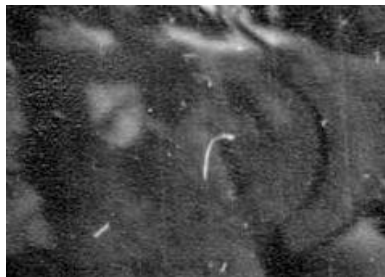
No known insignia

Panzer-Abteilung 2103: no specific insignia known

Panzer-Brigade 104

No known insignia

Panzer-Abteilung 2104: a panther insignia was painted on the Panther turrets

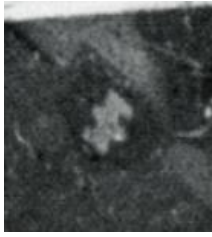


Panzer-Brigade 105

No known insignia

Panzer-Abteilung 2105: no specific insignia known

Panzer-Brigade 106 “Feldherrnhalle”



Wolfsangel

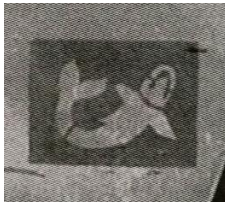
Panzer-Abteilung 2106: no specific insignia known

Panzer-Brigade 107



Panzer-Abteilung 2107: no specific insignia known

Panzer-Brigade 108



(unconfirmed)

Panzer-Abteilung 2108: no specific insignia known

Panzer-Brigade 109

No known insignia

Panzer-Abteilung 2109: no specific insignia known

Panzer-Brigade 110 “Feldherrnhalle”



(unconfirmed) **UPDATE!**

Panzer-Abteilung 2110: no specific insignia known

Panzer-Brigade 111

No known insignia

Panzer-Abteilung 2111: no specific insignia known

Panzer-Brigade 112

No known insignia

Panzer-Abteilung 2112: no specific insignia known

Panzer-Brigade 113

No known insignia

Panzer-Abteilung 2113: no specific insignia known

Heerestruppe

Panzer-Regiment von Lauchert (made up of Pz.Rgt.Stab 39, Pz.Abt. 51 and 52, July 1943)

No specific insignia identified for the Rgt.Stab

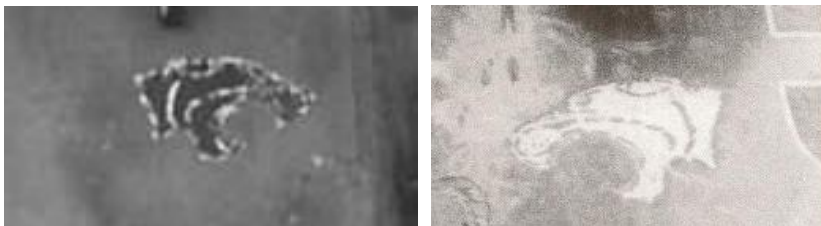
Panzer-Abteilung 51 (1.-4. Kp.) (ex-II. Abt./Pz.Rgt. 33):



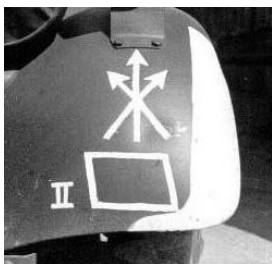
After being re-equipped, while in action with Pz.Gren.Div. "Grossdeutschland" (summer 1943):



Panzer-Abteilung 52 (5.-8. Kp.) (ex-I. Abt./Pz.Rgt. 15):



Panzer-Regiment 202



Panzer-Regiment 203



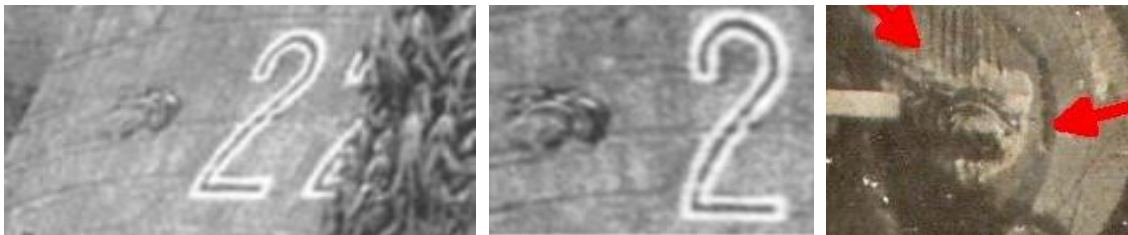
(Eastern front Dec. 1941 – Dec. 1942)

I. Abteilung/Panzer-Regiment 26

Already during training during 1943 a panther's head was painted on support vehicles



but it was not seen on tanks until summer 1944, when the panther's head was also painted on the turret side or on the gun mantlet's side



Panzer-Abteilung z.b.V. 66

No known insignia (Eastern front 1942-44)

Panzer-Abteilung 100 (F)



Wolfsangel (actually a stylized Z for von Zeschwitz, the name of the Abt. commander) coupled with a rhomboid (Eastern front 1941)



For 2. Kp. the unit insignia was sometimes associated to that of 17. Pz.Div.



and for 3. Kp. with that of 18. Pz.Div.
to which the companies were respectively subordinated

Panzer-Abteilung 101 (F)

No known insignia, but its tanks had circles painted around the turret rear corners



(Eastern front 1941)

Panzer-Abteilung 102 (F)



(Eastern front 1941)

Panzer-Abteilung 138

No known insignia (Eastern front December 1942 – March 1943)

Panzer-Abteilung 205

No known insignia (Western front)

Panzer-Abteilung 206

No known insignia (Western front)

Panzer-Abteilung 208



1944-45: as unofficial unit insignia it used a charging knight
Eastern front unconfirmed)

(used in Italy; use on

Panzer-Abteilung 211



W (for Wolf, the name of the Abt. commander)

(Finland)

Panzer-Abteilung 213

No known insignia (Channel Islands)

Panzer-Abteilung 214

No known insignia (Norway)

Sturmpanzer-Abt 216



1943 (as III. Abt./s.Panzerjäger-Rgt. 656): (Pampas insignia – not used on the Sturmpanzer)

Sturmpanzer-Abt 217

No known insignia

Sturmpanzer-Abt 218

No known insignia

Sturmpanzer-Abt 219

No known insignia

Panzer-Abteilung 223

No known insignia

Panzer-Abteilung (Fkl) 300/301

No known insignia

Vehicles - including tanks - often carried the tactical symbol for Fkl troops



(old style, 1942-43)



(new style, 1944)

schwere Panzer-Abteilung (Fkl) 301

No known insignia

Panzer-Abteilung (Fkl) 302

No known insignia

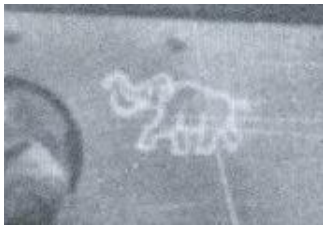
Some tanks carried the tactical symbol for Fkl troops, both old and new style (see Pz.Abt. (Fkl) 301)

schwere Panzer-Abteilung 501 / 424

No known insignia (on Eastern front 1944-45 – for Africa 1943 see specific section)

schwere Panzer-Abteilung 502 / 511

1943



(apparently not used after autumn 1943)

schwere Panzer-Abteilung 503 / "Feldherrnhalle"

early 1943



(apparently not used afterwards)

schwere Panzer-Abteilung 505

1943



1944-45



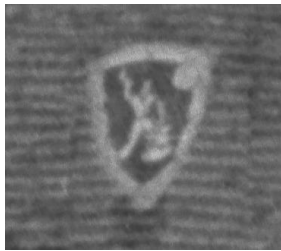
schwere Panzer-Abteilung 506

1944



schwere Panzer-Abteilung 507

1944



schwere Panzer-Abteilung 509

Reportedly it used a tiger's head as insignia; no known use on vehicles

schwere Panzer-Abteilung 510

1944: a Berliner Bär in a shield, no clear view available when used on vehicles



Panzer-Verband 700

No known insignia (Eastern front October 1942 – January 1943)

Pz.Lehr-Kompanie 233

1943



North-Africa 1941-43

5. leichte Division, later 21. Panzer-Division



Divisional insignia:

No known divisional insignia for 5. leichte Division; insignia shown refers to 21. Panzer-Division

Panzer-Regiment 5: no specific insignia. Upon arrival in Africa in March 1941 and for some time thereafter



its tanks still had the divisional insignia of 3. Panzer-Division After transformation into 21. Panzer-Division in August 1941 the new divisional insignia was introduced.



Insignia seen on a Pz.Kpfw. III in Tunesia 1943

(unit unconfirmed) **UPDATE!**

15. Panzer-Division



Divisional insignia:



Panzer-Regiment 8: as unit insignia it used a Wolfsangel

10. Panzer-Division



Divisional insignia: (rarely seen on tanks in North-Africa)



Panzer-Regiment 7: as unit insignia it used a bison (but rarely seen on tanks)

90. leichte Division



Divisional insignia:

(apparently not used on tanks in North-Africa)

Panzer-Abteilung 190: no specific insignia

schwere Panzer-Abteilung 501



As unit insignia it used a stalking tiger

schwere Panzer-Abteilung 504

No proper unit insignia but its tanks used a rhomboid with a coloured stripe and the company number next



to it

Balkans late 1941-44

(for the April 1941 campaign in the Balkans see part 1)

Panzer-Abteilung z.b.V. 12



(unconfirmed if the V was the unit insignia; the skull seems to have been used on this tank only)

Panzer-Abteilung 202

No known insignia

Panzer-Abteilung 212

No known insignia

Panzer-Abteilung Kreta

No known insignia

Panzer-Abteilung Rhodos



(only seen used on Stug of 1. Kp.)

Italy 1943-45

Panzer-Divisionen

Fallschirm-Panzer-Division "Hermann Goering"



Divisional insignia (1943-44):
(some of many examples – at the same time tactical symbol indicating sub-unit and company)

Fallschirm-Panzer-Regiment "HG": no specific insignia

16. Panzer-Division



Divisional insignia (1943):

Panzer-Regiment 2: no specific insignia



III. Abt./Pz.Rgt. 2 (StuG-Abt.) used as unit insignia the shape of a chess knight in a shield

24. Panzer-Division



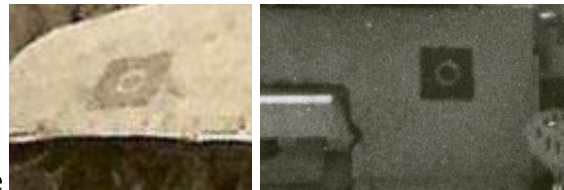
Divisional insignia (1943): leaping horseman

Panzer-Regiment 24: no specific insignia

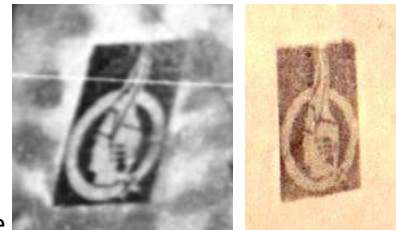
26. Panzer-Division

(for the insignia used in France during 1942-43, see the section on 'Eastern and Western front 1941-45')

Divisional insignia:



from Winter 1943-44: white circle in a black rectangle



replaced from spring 1944 by a Prussian grenadier's head on a circle

Panzer-Regiment 26: no specific insignia

I. Abt./Panzer-Regiment 4 (Panther Abteilung, integrated in 26. Pz.Div. as **I. Abt./Pz.Rgt. 26** in 1945): as unit



insignia it used a panther's head inside a triangle

Panzer-Grenadier-Divisionen

3. Panzer-Grenadier-Division



Divisional insignia (1943-44):

Panzer-Abteilung 103: no specific insignia

15. Panzer-Grenadier-Division



Divisional insignia (1943 to mid-44): a star with the initial of the sub-unit commander

New insignia from around mid-1944: a three-pointed star



Panzer-Abteilung 215 / 115: as unit insignia it used initially the divisional star with a G inside (for Gierga)



later with a T (for Tölke)



Also used on vehicles was a rhomboid with a coloured stripe and the company number



sometimes coupled with the divisional insignia



In Sicily only, tanks also carried on their turrets a crest with a number



29. Panzer-Grenadier-Division

Divisional insignia (1943-45): a falcon



Panzer-Abteilung 129: no proper unit insignia but its tanks sometimes had a rhomboid painted on the superstructure front and rear, occasionally with the falcon



90. Panzer-Grenadier-Division

Divisional insignia (1943-45): the shape of Sardinia with a superimposed sword in different colours



Panzer-Abteilung 190: no specific insignia

16. SS-Panzer-Grenadier-Division “Reichsführer SS”

See section on Waffen-SS

Heerestruppe

Panzer-Abteilung 208



1944: as unofficial unit insignia it used a charging knight

Panzer-Abteilung 212

No known insignia

Sturmpanzer-Abt 216



1944: ('Ho' for Horstman, the Abt.Kdr.; reportedly, the background colour was white for Stab and Stabskp., red for 1. Kp., yellow for 2. Kp., green for 3. Kp. and blue for WK-Kp.) – insignia used on vehicles but not seen on the Sturmpanzer

Panzer-Abteilung (Fkl) 301

1944: no known insignia

Vehicles - including tanks - often carried the tactical symbol for Fkl troops



(W for Werkstatt = workshop)

schwere Panzer-Abteilung 504

Sicily 1943 (as part of Pz.Abt. 215): same marking as in Tunisia (white rhomboid with a coloured stripe) plus the divisional insignia of 15. Pz.Gren.Div. in which the Abteilung had been integrated



1944-45: as unit insignia it used a spear on a track

schwere Panzer-Abteilung 508



1944-45: as unit insignia it used a bison, sometimes inside a shield

2. Panzer-Sicherungs-Kompanie

No known insignia

3. Panzer-Sicherungs-Kompanie

1943-44: Gemsbock (chamois buck) with a rhomboid and a B (for Bohn, the company commander)



Panzer-Einsatz-Kompanie 35

No known insignia

Waffen-SS NEW

Panzer-Divisionen

1. SS-Panzer-Division „Leibstandarte SS AH“

Divisional insignia:

1942



1943-45



SS-Panzer-Regiment 1: no specific insignia

2. SS-Panzer-Division „Das Reich“

Divisional insignia:



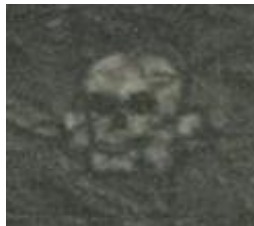
Temporary insignia (“Kursk marking”) summer – autumn 1943



SS-Panzer-Regiment 2: no specific insignia

3. SS-Panzer-Division „Totenkopf“

Divisional insignia:



(two of many slight variations)



Temporary insignia (“Kursk marking”) summer – autumn 1943

SS-Panzer-Regiment 3: no specific insignia

5. SS-Panzer-Division „Wiking“



Divisional insignia: 1942-43



1944-45

SS-Panzer-Abteilung 5 / SS-Panzer-Regiment 5: no specific insignia

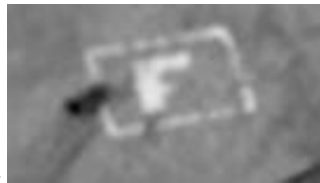
9. SS-Panzer-Division „Hohenstaufen“



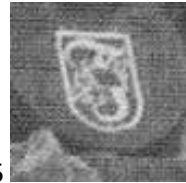
Divisional insignia:

SS-Panzer-Regiment 9: no specific insignia

10. SS-Panzer-Division „Frundsberg“



Divisional insignia: 1944



1945

SS-Panzer-Regiment 10: no specific insignia

Panzer-Grenadier-Divisionen

4. SS-Polizei-Panzer-Grenadier-Division



Divisional insignia: (no known use on vehicles)

SS-Panzer-Abteilung 4: no specific insignia

11. SS-Panzer-Grenadier-Division „Nordland“



Divisional insignia:

SS-Panzer-Abteilung 11: no specific insignia

16. SS-Panzer-Grenadier-Division “RFSS”



Divisional insignia (late 1943-45):

The division's predecessor, the **Sturmbrigade “RFSS”**, used as its insignia the runic SS during 1943



SS-Panzer-Abteilung 16: no specific insignia

17. Panzer-Grenadier-Division „Goetz von Berlichingen“



Divisional insignia:

SS-Panzer-Abteilung 17: no specific insignia

18. Panzer-Grenadier-Division „Horst Wessel“



Divisional insignia:

(no known use on vehicles)

SS-Panzer-Abteilung 18: no specific insignia

Heerestruppe

schwere SS-Panzer-Abteilung 101/501



schwere SS-Panzer-Abteilung 102/502



schwere SS-Panzer-Abteilung 103/503

No known insignia

SS-Panzer-Abteilung 105

No known insignia